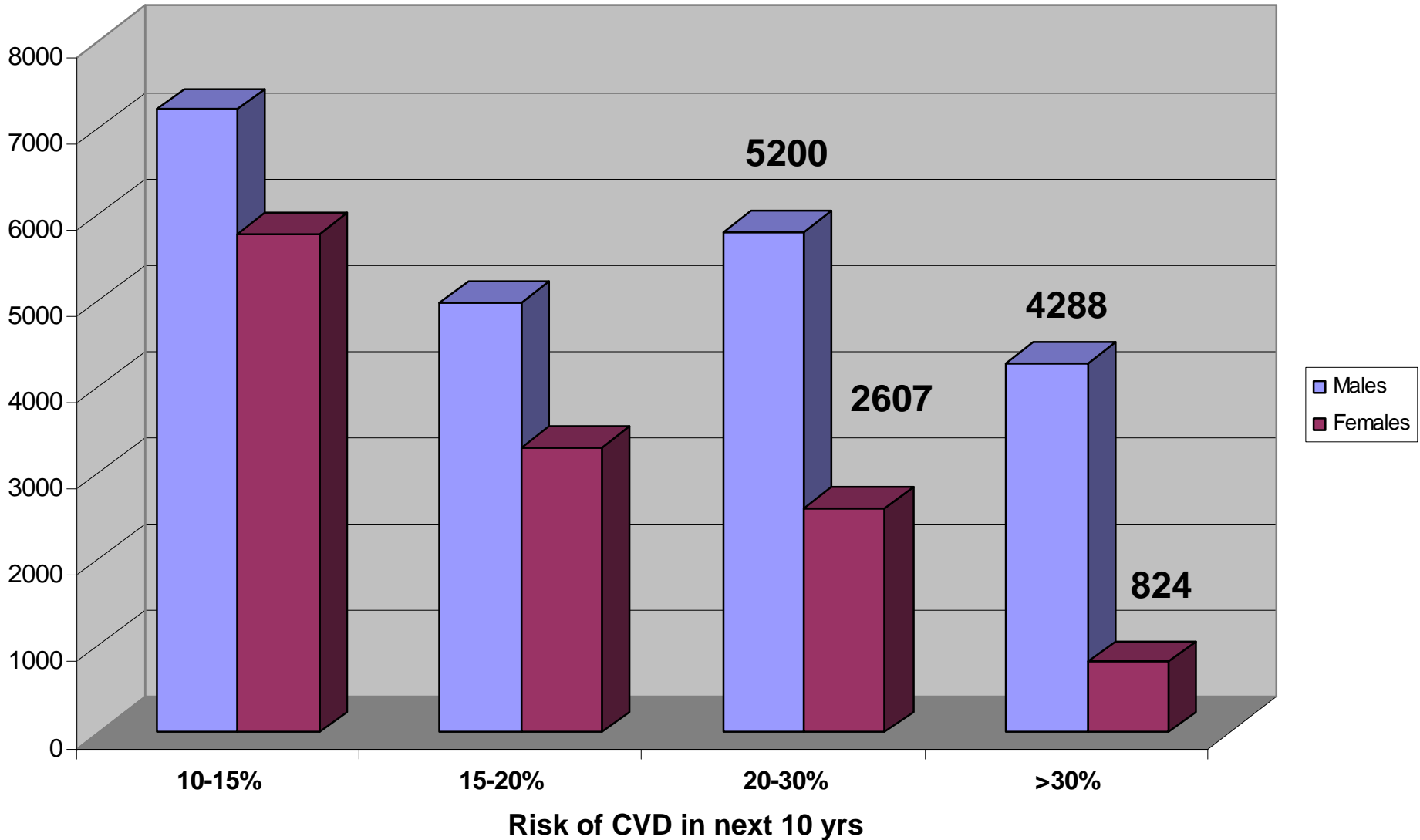


NCL NHS Health Checks Task Group

Estimated numbers at risk



Total with CVD risk > 20% in NCL = 60,000

NCL NHS Health Checks Task Group

- First meeting 23rd October
- 5 NCL PCT leads and secondary care rep
- Issues to be covered:
 1. Progress reports from the 5 PCTs
 2. Specific areas:
 - IT issues
 - Primary care / LES issues
 - Capturing hard to reach groups
 - Evaluation
 - Pharmacy Pilots

Group objectives - possibilities

- ??
- Help delivering targets – nil for next 2 years
 - Screen 20% of eligible population annually from 2012/13
- Sharing experience
- Piloting various approaches – esp. hard to reach
- Keep PCTs updated re-national/regional guidance
- Guidelines e.g. on risk assessment
- Sector-wide procurement for economies of scale
- Training & education